

ARCHITECTURAL RECORD

BUILDING TYPES STUDY NUMBER 203

SHOPPING CENTERS



OCTOBER 1953

Hotel Copan, São Paulo, Brazil
Henrique E. Mindlin, Architect
Holabird & Root & Burgee, Associate Architects

ARCHITECTURAL RECORD



Copyright 1953 by F. W. DODGE CORPORATION, with all rights reserved • Publishing Director, Magazine Division, H. Judd Payne • General Manager, Robert F. Marshall • **EDITORS:** Executive Editor, Joseph B. Mason; Managing Editor, Emerson Goble; Senior Associate Editors, Frank G. Lopez, A.I.A., James S. Hornbeck

A.I.A.; Associate Editors: Robert E. Fischer (Engineering), Florence A. van Wyck, Herbert L. Smith, Jr., A.I.A., Jeanne M. Davern (News), Elisabeth Kendall Thompson (Western); Contributing Editors: Ernest Mickel (Washington), John Caulfield Smith, M.R.A.I.C. (Canada); Assistant Editors: Jeanne G. Whitbeck (Reader Service), Enid Belding (Books), Carl Sclarenco (Technical); Editorial Assistant, Marjorie Blake • **DESIGN:** Consultant, M. Peter Piening; Director, Alfred Petersen; Assistants: Donald Ervin, Joseph D'Amato; Drafting, Sigman-Ward • **CONSULTANTS:** Industry Relations Consultant, Thomas S. Holden; Statistical Consultant, Clyde Shute; Field Consultant, Clifford Dunnells, Jr.; Public Relations Consultant, Samuel C. Pace.

Architectural Record (combined with American Architect and Architecture) is published monthly by F. W. Dodge Corporation, 10 Ferry Street, Concord, N. H., with editorial and executive offices at 119 West 40th Street, New York 18, N. Y. Western editorial office, 2877 Shasta Road, Berkeley 8, Calif.

Chairman of the board, James McV. Breed; vice chairmen of the board: Paul Abbott, Thomas S. Holden; president, Howard Barringer; secretary, Sanford D. Stockton, Jr.; executive vice presidents: Irving W. Hadsell, Chauncey L. Williams; vice president and treasurer, Howard M. Thompson; vice presidents: H. Judd Payne, T. Oliver Morgan, Julius T. Little, Robert F. Marshall; assistant secretaries: George W. Morgan, Jr., William C. Breed, Jr.; assistant vice president and comptroller, Edwin H. Freed; assistant vice presidents: Clyde Shute, Clifford G. Dunnells, Jr., Marc Wayne, Walter F. DeSaix; assistant treasurer, Irving B. Sabin; regional vice presidents: Carl S. Bennett, Ralph M. Hairston, Richard H. Ray.

Subscription rates in U.S., U.S. Possessions, and Canada: \$5.50 for one year, \$9.00 for two years, \$11.00 for three years. Elsewhere, subscriptions from those who by title are architects or engineers, \$6.50 for one year, \$11.50 for two years, \$15.00 for three years; subscriptions from all others outside U.S., U.S. Possessions and Canada, \$20.00 a year. Single copy price, \$2.00. Circulation Manager: Marshall T. Ginn.

Change of Address: Subscribers are requested to furnish both old and new addresses, sending if possible the stencil impression from magazine wrapper. Allow four weeks for change.

Member of Audit Bureau of Circulations and Associated Business Publications. Architectural Record is indexed in Readers' Guide to Periodical Literature, Art Index, Industrial Arts Index and Engineering Index.

Every effort will be made to return material submitted for possible publication if accompanied by stamped, addressed envelope, but the editors and the corporation will not be responsible for loss or damage.

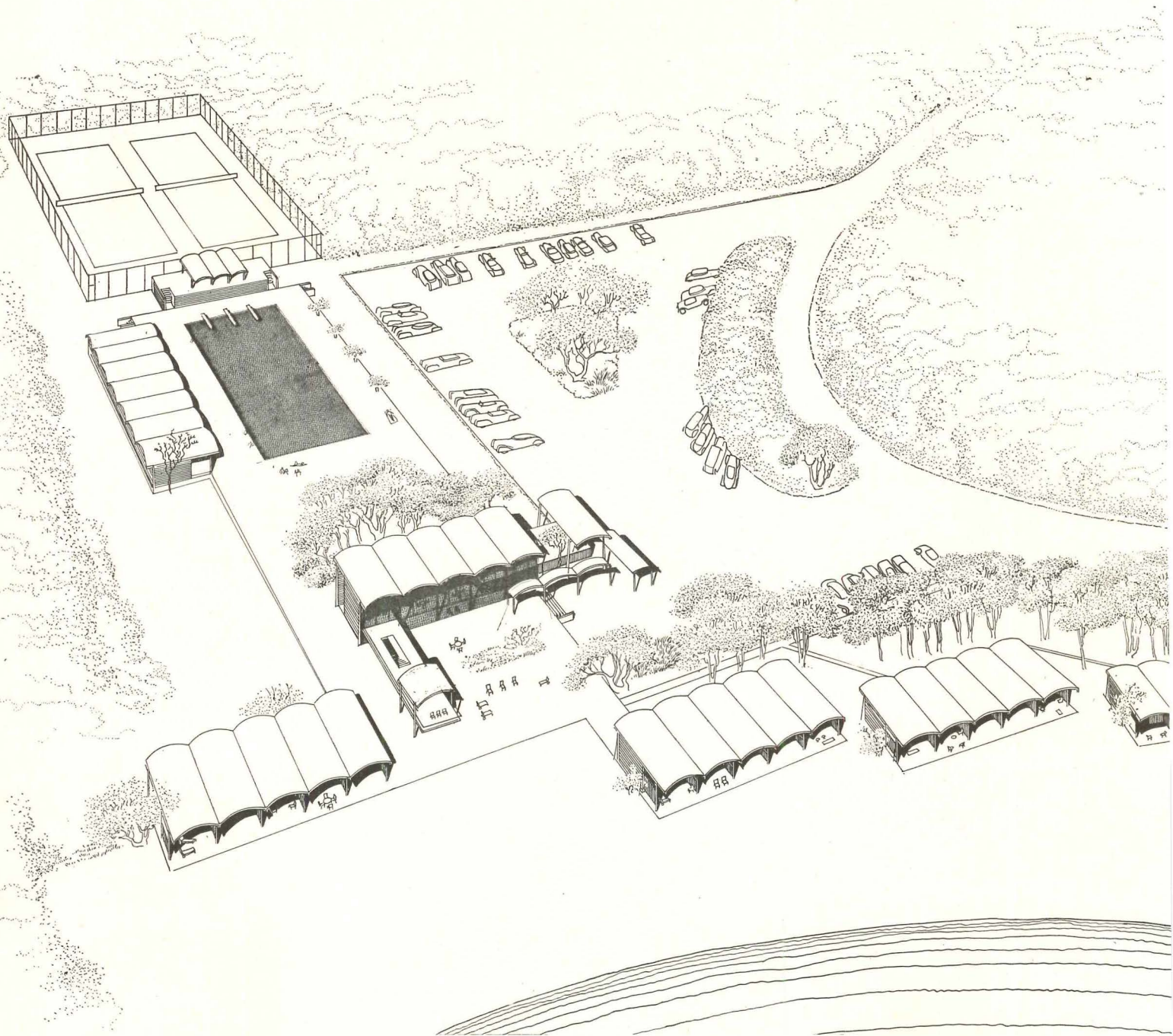
Other Dodge services: Dodge Reports and Dodge Statistical Research Service, Sweet's Files, "Planning Kit for Our New House," Chicago Construction News, Daily Pacific Builder, Denver Daily Journal, Real Estate Record & Builders' Guide.

COVER

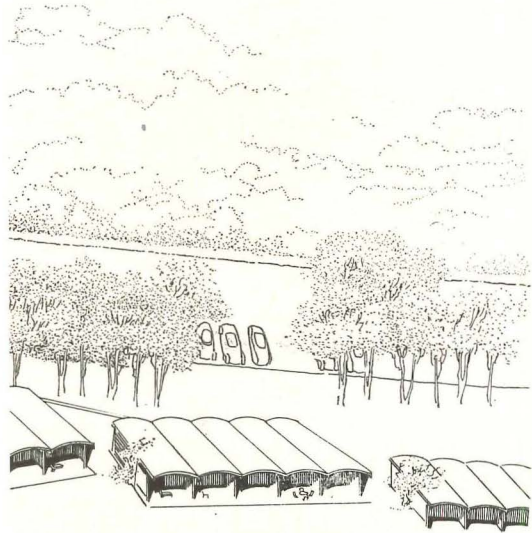
Photograph of Hotel Copan, São Paulo, Brazil; Henrique E. Mindlin, Architect, Holabird and Root and Burgee, Associate Architects. Photograph by Bill Hedrich, Hedrich-Blessing.

THE RECORD REPORTS	9
Perspectives	9
News from Canada. By John Caulfield Smith	24
News from Washington. By Ernest Mickel	40
Construction Cost Indexes	42
Current Trends in Construction	366
REQUIRED READING	46
HOTEL COPAN, SÃO PAULO, BRAZIL	135
Henrique E. Mindlin, Architect; Holabird and Root and Burgee, Associate Architects	
BOSTON BACK BAY CENTER	following page 142
"THE SPIRIT OF THE NEW ARCHITECTURE"	143
By Pietro Belluschi	
SANDERLING BEACH CLUB, SARASOTA, FLA.	150
Paul Rudolph, Architect	
REPAIR SHOP COMBINES EFFICIENCY, FLEXIBILITY	156
Anniston Ordnance Depot Vehicle Maintenance Shop, Anniston, Ala. Sherlock, Smith and Adams, Architects and Engineers	
SMALL HOUSE — LOTS OF SPACE	162
Residence for Mr. and Mrs. John E. Schacht, Portchester, N. Y. Carl Koch and Associates, Architects	
TUBERCULOSIS HOSPITAL IN HAWAII ACCENTS CHEERFUL SURROUNDINGS	166
Puumaile Hospital, Hilo, Hawaii. Merrill, Simms and Roehrig, Architects	
ARCHITECTURAL INTERIORS	173
Offices for Cunningham and Walsh, Inc., New York City. Carson and Lundin, Architects	
BUILDING TYPES STUDY NO. 203: SHOPPING CENTERS	178
INTRODUCTION	178
A PLACE TO BEGIN	180
WHAT MAKES A SHOPPING CENTER	181
SITE SELECTION	181
PLANNING THE SITE	186
THE NECESSARY PARKING	192
SERVICES, AMENITIES	197
VARIATIONS	200
ARCHITECTURAL ENGINEERING	202
ECONOMIES IN AIR CONDITIONING FOR SHOPPING CENTERS	202
A general discussion of the considerations involved in selecting the best system. By Francis A. Welch	
EMPLOYEE CAFETERIAS	206
How to plan for seating and service requirements. By Arthur W. Dana	
PRODUCT REPORTS	209
Products chosen for 1953 Good Design Exhibition	
OFFICE LITERATURE	210
TIME-SAVER STANDARDS	213
INDEX TO ADVERTISING	368

SANDERLING BEACH CLUB, SARASOTA, FLA.

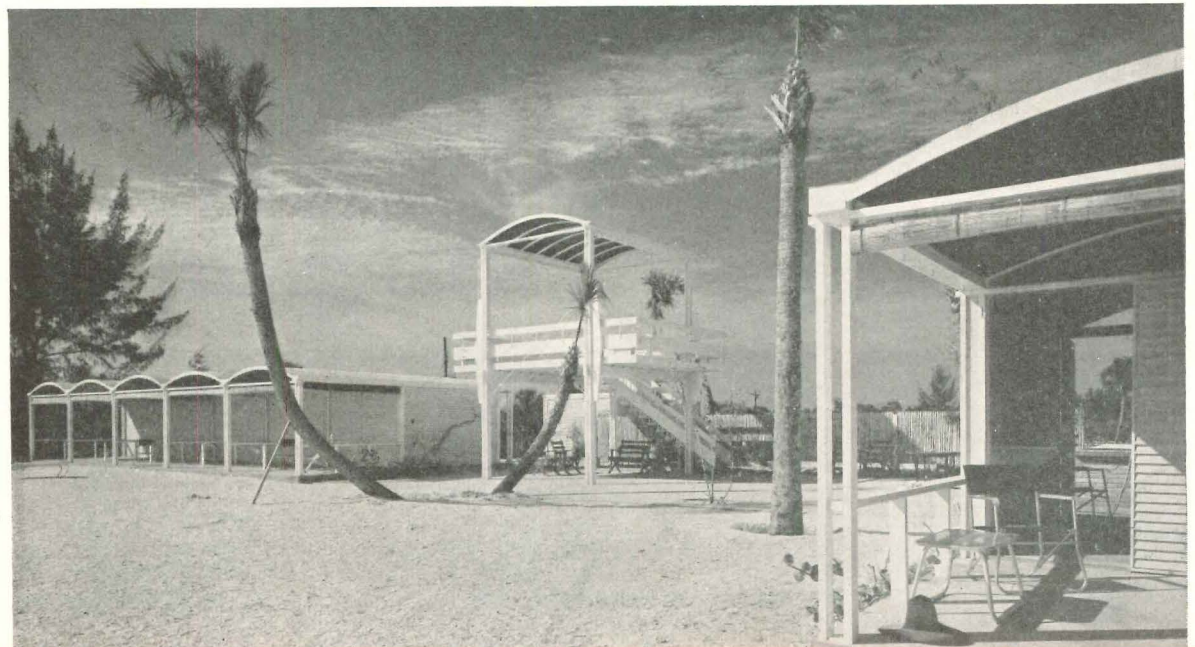
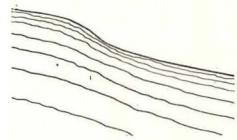


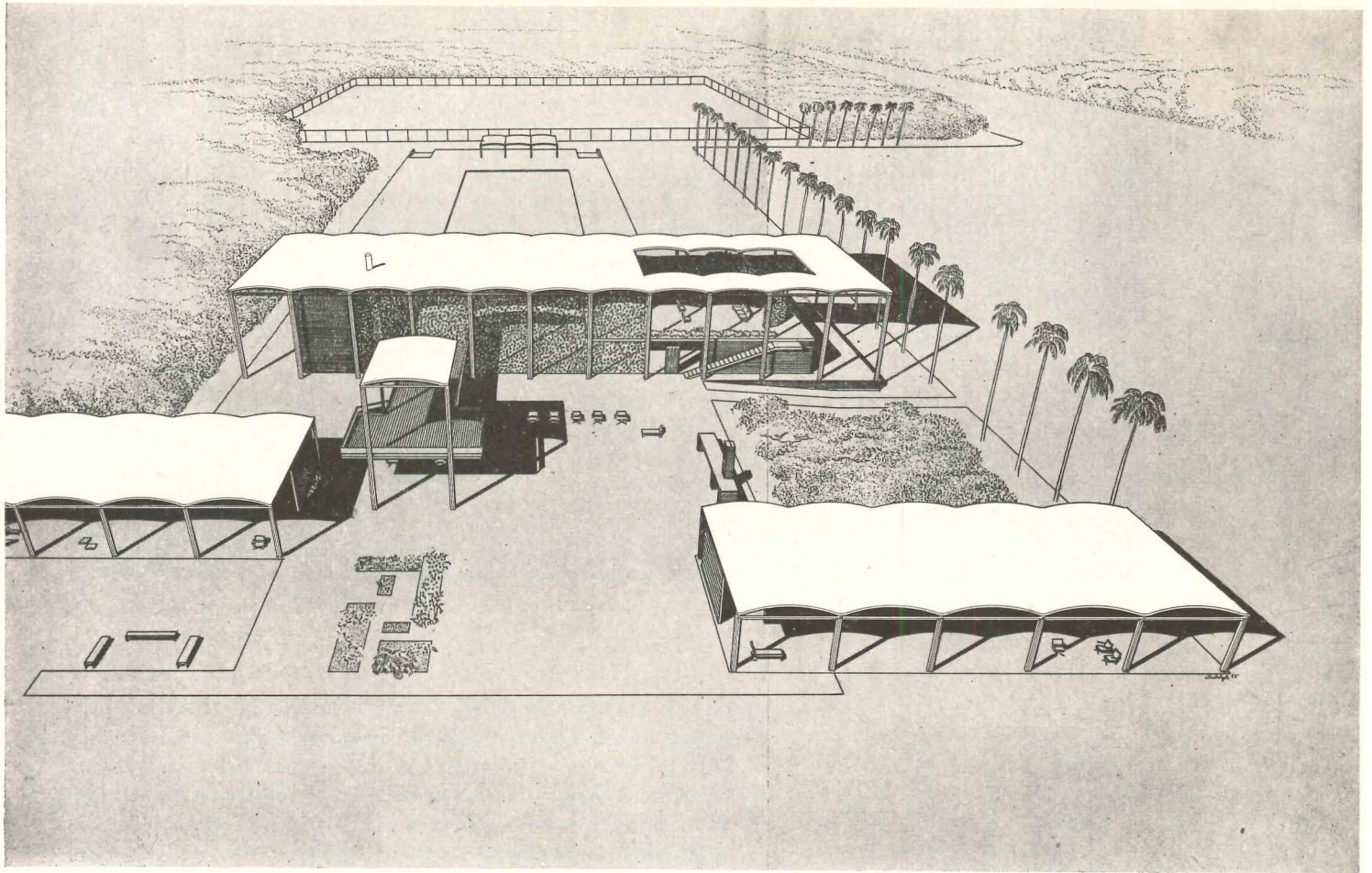
Paul Rudolph, Architect; Landscaping, Edward Shields



THE CABANA CLUB designed for Sanderling Beach, Inc., at Siesta Key is simple, appropriately gay in concept, and architecturally of much interest as an example of technical excellence applied with a sure esthetic sense to a common design problem. At first glance the plywood shell roofs — which are detailed on the following pages — would seem to command the most attention. These are exciting, it is true; but of at least equal importance are such matters as the careful organization of the units on the site, so that the identically repetitive cabanas and groups of cabanas are not monotonous; the use throughout of standard framing lumber sizes in ways that average labor can execute with little difficulty; and a certain reverence for the essence of architectural tradition which may not be obvious. Rudolph says he prefers things which, like the classic column, have “a beginning, a middle and an end”; one can almost find here the satisfactions afforded by the traditional capital, tympanum and architrave. The economy of means is also in the classic spirit.

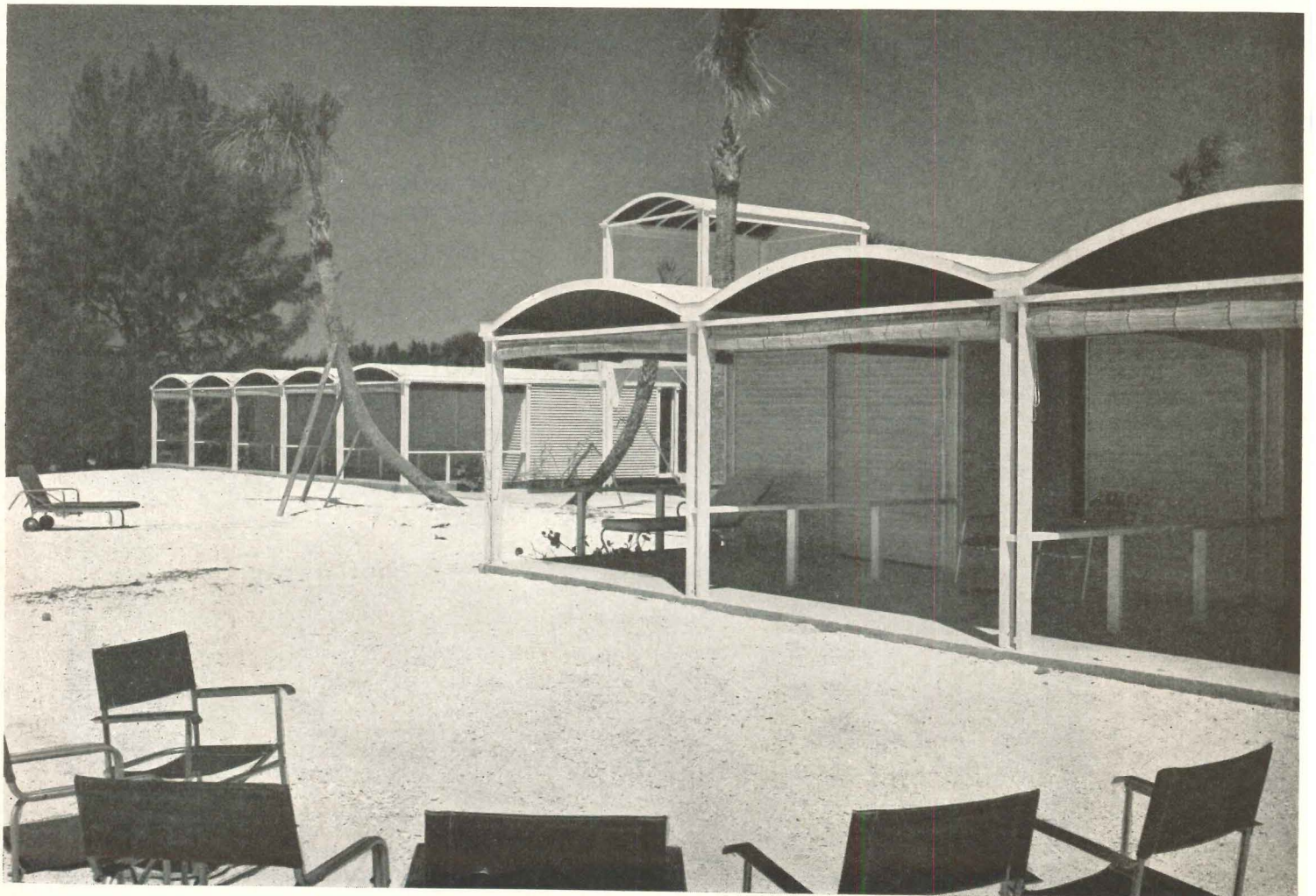
Siesta Key is a restricted development; this is its beach club, and several resident-members participated in its construction.



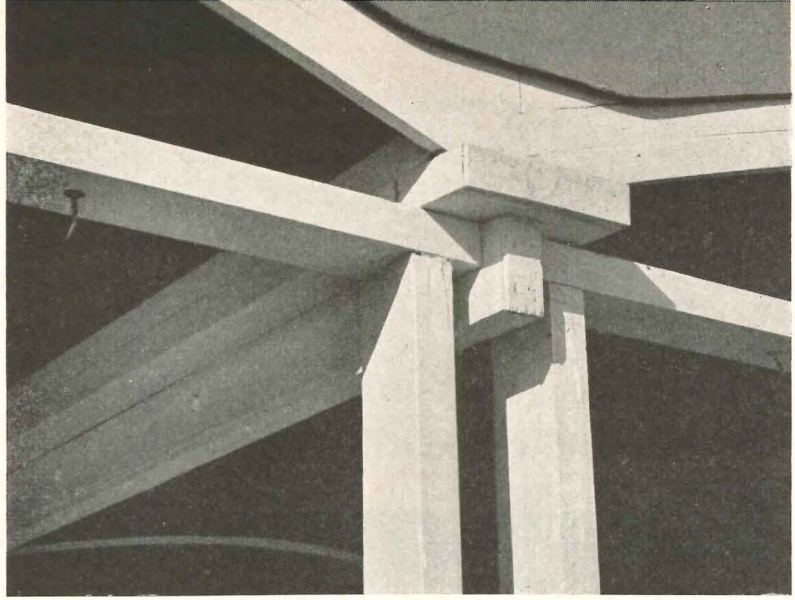


FLORIDA BEACH CLUB

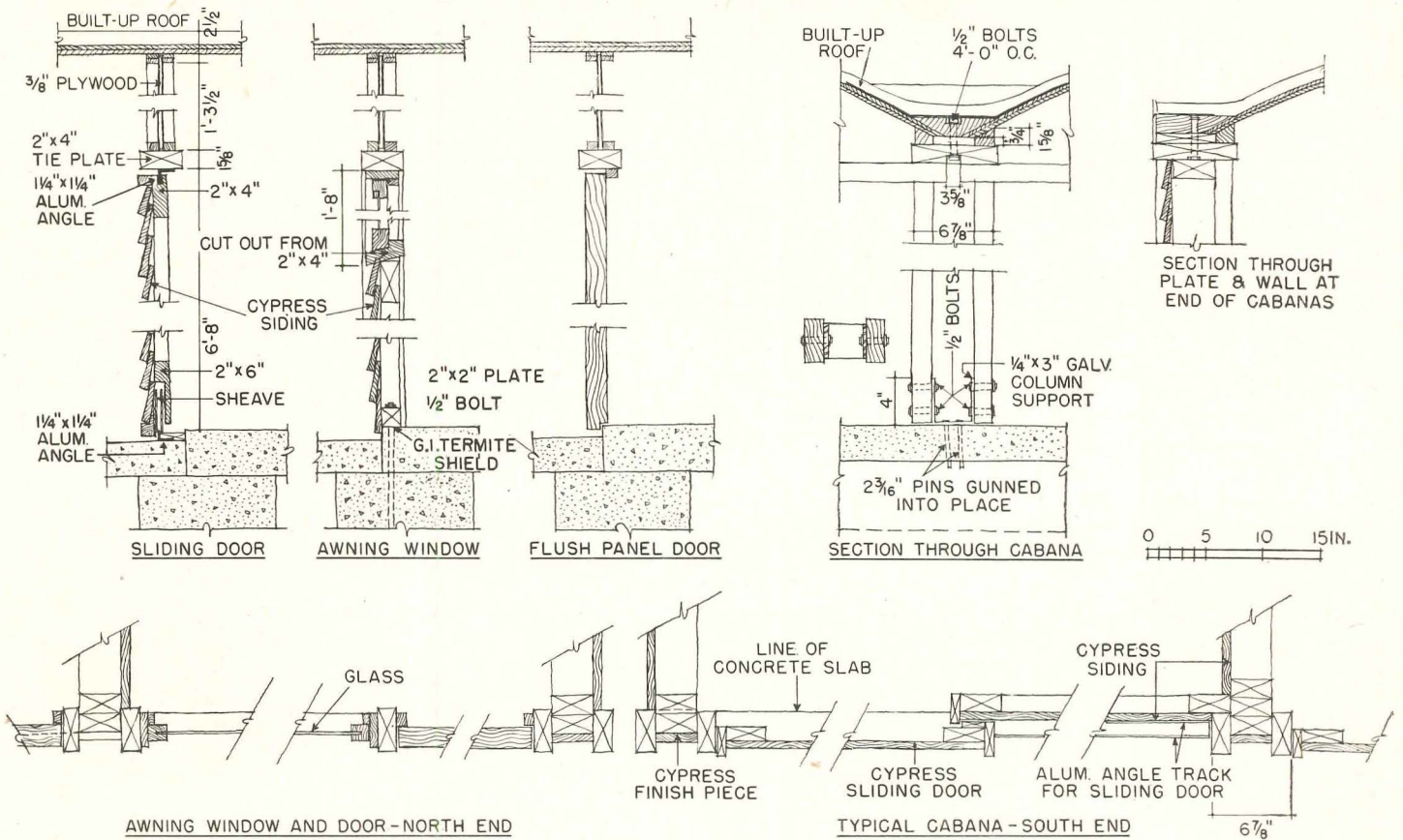
The rendering on the preceding two pages shows one of the first schemes for the central pavilion. Above is the final design, not yet built



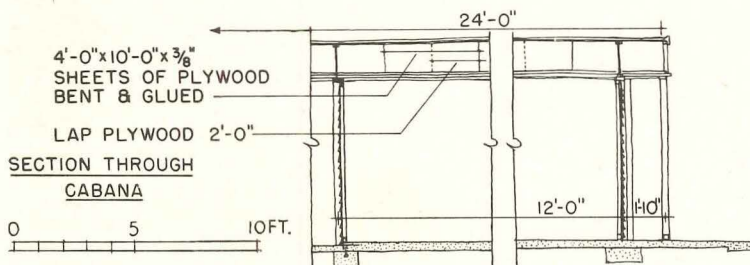
Barrel-vaulted roof is formed of two lapped, glued sheets of 1/2-in. plywood, held by edge members bolted down to withstand lifting action of wind. Tie rods, at first thought necessary, were omitted because method of forming made thrust negligible: plywood sheets were bound to a short radius while glue set; when released they expanded to final curvature

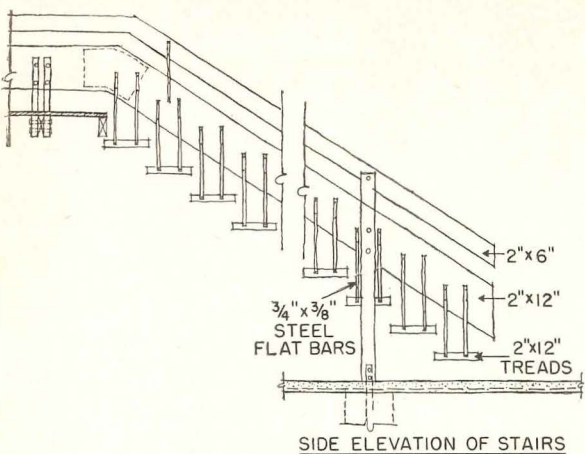


© Ezra Stoller



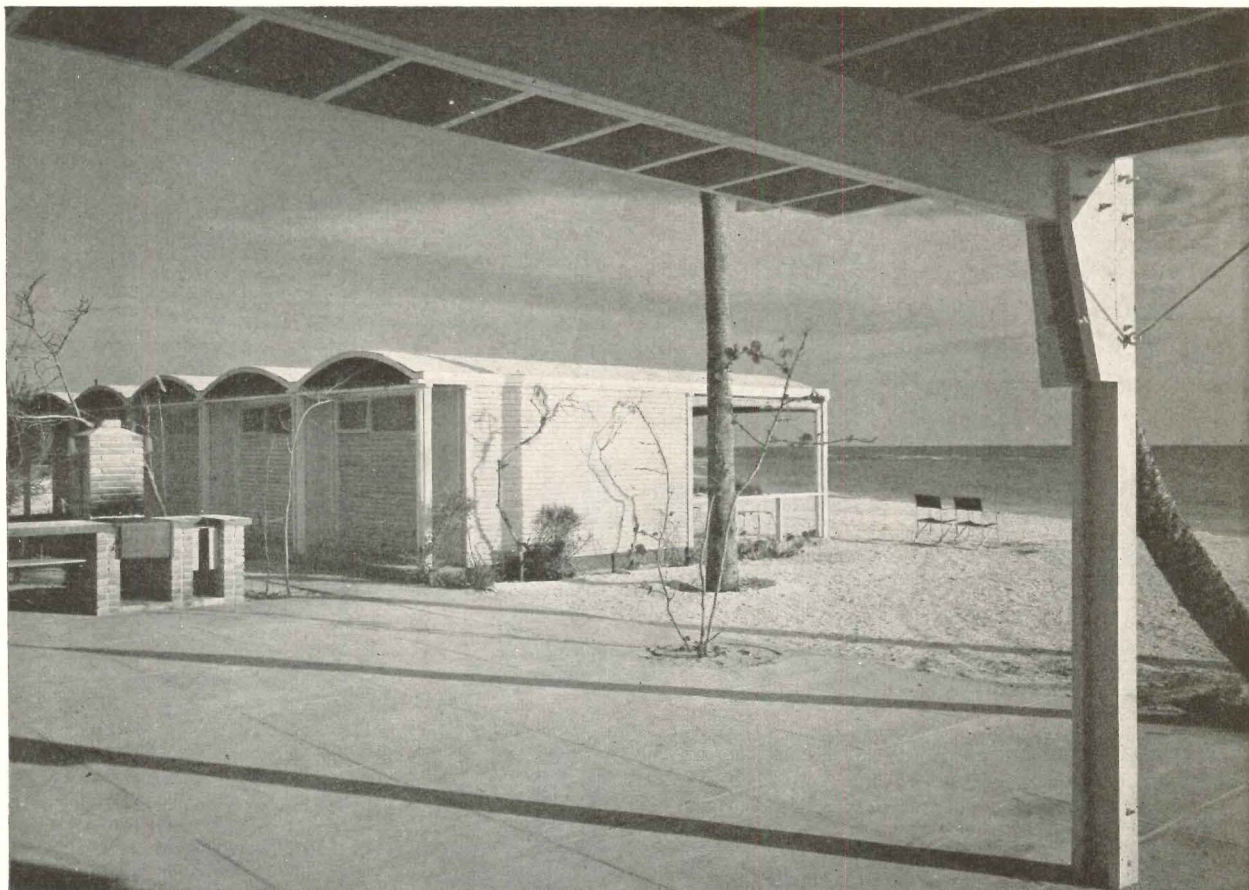
A 20-year-bonded built-up roof was used after "cocoon" roofing (used in moth-balling naval equipment) had been considered and discarded because initial and amortized cost were both high





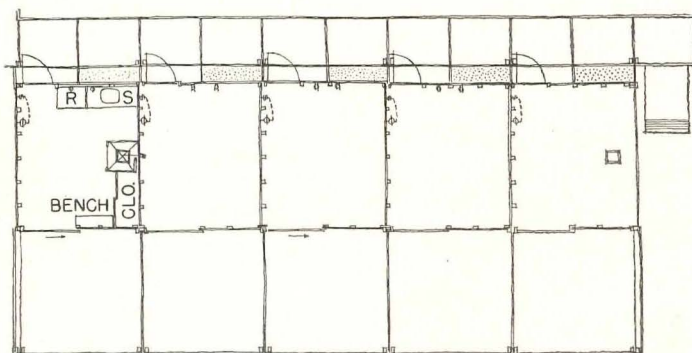
SIDE ELEVATION OF STAIRS

The central pavilion (facing page; photo below taken from beneath it) is also deceptively simple — the result of careful refinement and detailing. As in cabanas, all members are standard framing lumber so placed that each piece does its job economically and directly. Steel cables in tension brace the structure diagonally. The only concealed fastenings occur in stair and platform railing, where the corners are joined with 1/4-in.-thick steel plates mortised into the abutting wood members like splines.



© Ezra Stoller

FLORIDA BEACH CLUB



Cabanas are in small groups around the pavilion; more may be built in the future. Each cabana is equipped as the permanent occupant wishes, including such items as refrigerator, sink, bar storage, shower, closet, etc. Doors at both ends (see details on preceding page) and canopies front and back provide welcome ventilation and shade. Toilets are in a separate unit behind the pavilion

